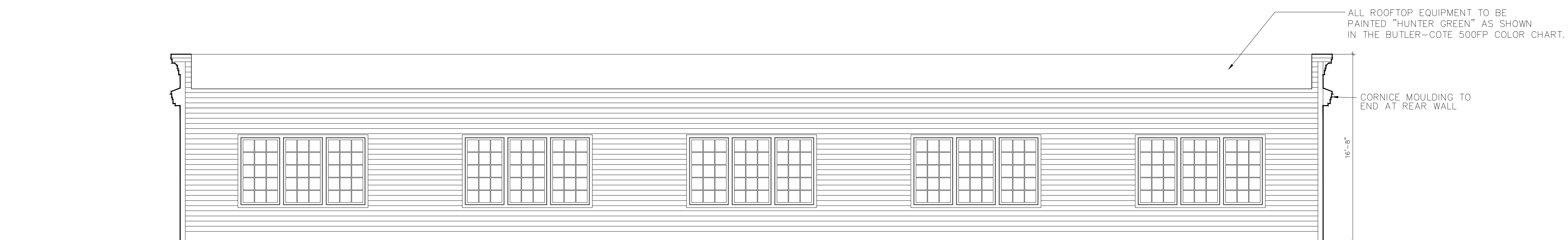


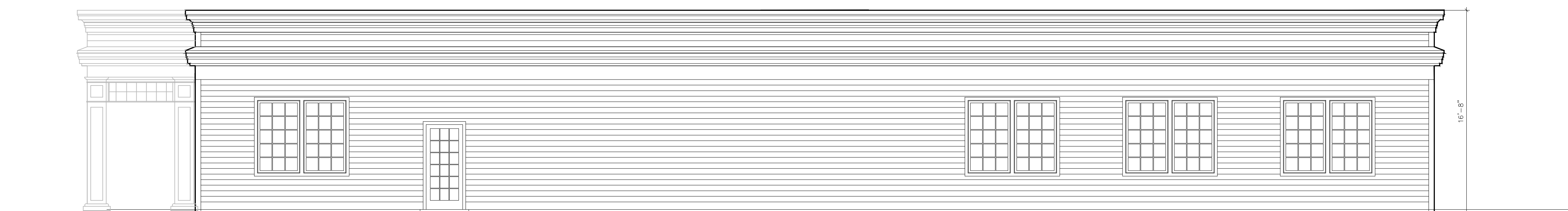
- PARAPET MOULDING
- CORNICE MOULDING TO WRAP AROUND BLDG.
- 5/4 WOOD FASCIA
- MARVIN FIXED WOOD WINDOWS WITH SIMULATED DIVIDED LITES (SDL) (SIZE 3'-6" X 6'-0" EACH). GLASS TO BE "LOW E II WITH ARGON." SEE DETAILS 3,4,5/A4-1
- 6" WOOD CLAPBOARD SIDING (PAINTED MBNA GREY)

1 FRONT ELEVATION
SCALE: 3/16" = 1'-0"



- ALL ROOFTOP EQUIPMENT TO BE PAINTED "HUNTER GREEN" AS SHOWN IN THE BUTLER-COTE 500FP COLOR CHART.
- CORNICE MOULDING TO END AT REAR WALL

2 REAR ELEVATION
SCALE: 3/16" = 1'-0"



3 RIGHT SIDE ELEVATION
SCALE: 3/16" = 1'-0"



4 LEFT SIDE ELEVATION
SCALE: 3/16" = 1'-0"

COPYRIGHT © HOMSEY ARCHITECTS, INC. 1998

△	FRONT WALL WINDOW REVISION	5-10-99
	ISSUED FOR BIDDING	4-14-99
#	DESCRIPTION	DATE

R E V I S I O N S

EXTERIOR ELEVATIONS

MBNA AMERICA
TELEMARKETING BLDG.
PROTOTYPE
FARMINGTON, MAINE

PROJECT NO. 99009	SCALE • 3/16" = 1'-0"
DRAWN BY: CRM/LJW	DATE • 14 APRIL 1999
CHECKED BY: CBR	DRAWING NO. A2-1